



Marinatek Deniz

AIDS TO NAVIGATION AND MOORING BUOYS



www.marinateknik.com.tr





FLC1200

DIMENSION	
Diameter (mm)	1 200
Volume (l)	570
Draught (mm)	290
Freeboard (mm)	435
Overall height (mm)	1 775
Mast (mm)	1 050
TECHNICAL SPECIFICATIONS	
Weight with ballast (kg)	127
Polyurethane foam (kg/m ³)	40
Submergence (kg/cm)	11
Visible area (m ²)	1.1
Focal plane (mm)	2 058

Options: Carmanah lanterns (M550, M650H), topmarks and St Andrew cross, radar reflector



FLC1500

DIMENSION	
Diameter (mm)	1 500
Volume (l)	987
Draught (mm)	355
Freeboard (mm)	520
Overall height (mm)	1 925
Mast (mm)	1 050
TECHNICAL SPECIFICATIONS	
Weight with ballast (kg)	208
Polyurethane foam (kg/m ³)	40
Submergence (kg/cm)	13
Visible area (m ²)	1.7
Focal plane (mm)	2 191

Options: Carmanah lanterns (M550, M650H), topmarks and St Andrew cross, radar reflector



FLC1800

DIMENSION	
Diameter (mm)	1 800
Volume (l)	1 544
Draught (mm)	560
Freeboard (mm)	521
Overall height (mm)	2 710
Mast (mm)	1 554
TECHNICAL SPECIFICATIONS	
Weight with ballast (kg)	432
Polyurethane foam (kg/m ³)	40
Submergence (kg/cm)	21
Visible area (m ²)	2.3 to 3.3
Focal plane (mm)	2 940

Options: Carmanah lanterns (M650H, M850, M860), topmarks and St Andrew cross, service ladder, solar pyramid, high visibility day mark



FLC2200

DIMENSION	
Diameter (mm)	2 200
Volume (l)	3 335
Draught (mm)	560
Freeboard (mm)	790
Overall height (mm)	3 480
Mast (mm)	2 054
TECHNICAL SPECIFICATIONS	
Weight with ballast (kg)	725
Polyurethane foam (kg/m ³)	40
Submergence (kg/cm)	38
Visible area (m ²)	3.3 to 4.3
Focal plane (mm)	3 700

Options: Carmanah lanterns (M650H, M850, M860), topmarks and St Andrew cross, service ladder, solar pyramid, high visibility day mark



FLC3000

DIMENSION	
Diameter (mm)	3000
Volume (l)	8170
Draught (mm)	1720
Freeboard (mm)	1092
Overall height (mm)	6940
Mast (mm)	2834
TECHNICAL SPECIFICATIONS	
Weight with ballast (kg)	2077
Independent float	4
Submergence (kg/cm)	60
Visible area (m ²)	6.6
Focal plane (mm)	4370

Options: Carmanah Sabik marine lanterns, AIS, solar panels, batteries, various sensors and devices



Wide range of Marine lanterns



Eco friendly: Recyclable polyethylene, heavy metal free



Ballasts: Cast iron



Float and mast: UV-stabilized polyethylene high density



Lightness and Modularity: Easy assembly and deploy

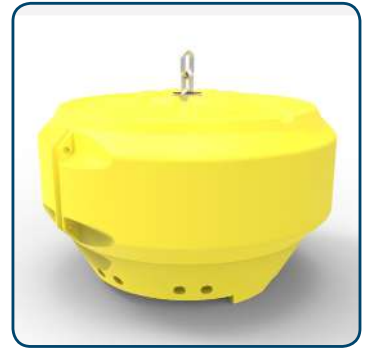
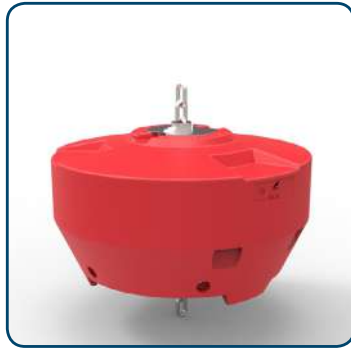
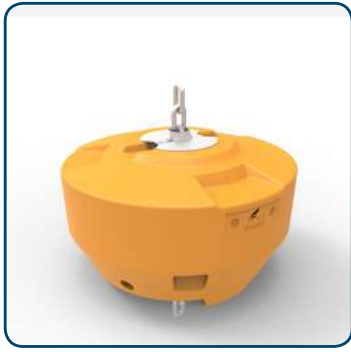


Structure, lifting and mooring points: Hot dip galvanized S235-steel



IALA specifications: Pigments integrated into the polyethylene for no painting ever

MOORING BUOYS



SPECIFICATIONS	<i>FLCMOOR1200</i>	<i>FLCMOOR1500</i>	<i>FLCMOOR1800</i>	<i>FLCMOOR2200</i>
Diameter (mm)	1200	1500	1800	2200
Net buoyancy (l)	543	950	1488	3243
Weight (kg)	92	127	210	345
Height (mm)	779	929	1150	1420
Safe Working Load (T)	10	10	20	20
Recommended Chain	ND 25 4D SL2	ND 25 4D SL2	ND 35 4D SL2	ND 35 4D SL2

Rotationally molded UV stabilized high density polyethylene. S235 steel galvanized. Polyurethane foam. Available in a wide range of colors. Optional marine lantern.



www.marinateknik.com.tr

